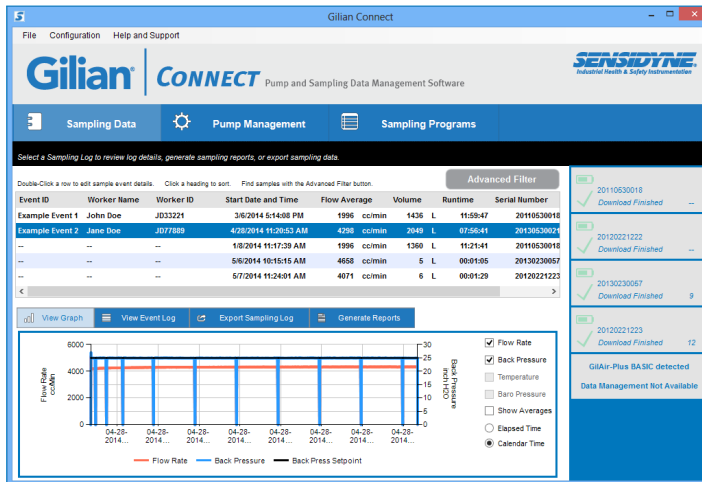


Gilian[®] | CONNECT

Pump and Sampling Data Management Software



Gilian CONNECT is an essential tool that assists Industrial Hygienists and Occupational Health and Safety professionals to overcome the challenges of organizing air sampling data, creating sampling reports and managing pump fleets.

- Centralize sampling data for reporting, analysis, archiving and retrieval.
- Save time with reusable report templates and auto-complete data from database entries
- Enter lab result data into sampling records and quickly create customizable reports for printing, PDF e-mailing, or saving to disk
- Configure and program air sampling pumps for rapid deployment

Sample ID	Sample 1	Sample 2	Sample 3	Sample 4
Target Substance	Cadmium	Chromium, Hexavalent		
Molecular Weight	0	0		
Sample Method	NIOSH 7200	NIOSH 7500		
Sample Media	MCE Filter	PVC Fiber		
Flow Rate (Pre-Cal, Post-Cal)	2500 2435	2000 1990	0 0	0 0
Sampled Volume (Amb, STP)	1174 1133	950 917	-- 0	-- 0
Lab Results Concentration	1.111 µg	3.333 µg	Null Val	Null Val
Concentration STP	0.000081 mg/m³	0.000084 mg/m³	Null Val	Null Val
User-Entered Concentration	0.000091	0.000094		

Gilian CONNECT is the ultimate air sampling data and pump management solution that automates tasks and simplifies record administration. The application can be fully customized to user preferences including measurement units, storage of worker information, and creation of reporting templates. Gilian CONNECT will save professionals valuable time while enhancing analysis capabilities and gaining improved control over their sampling data.

Program Name: NIOSH XYZ
Mode: Constant Flow
Flowrate: 2000 cc/min
Description: Begins at 8am Samples for 10 minutes every hour for 8 hours.

Step	Time	Action
1	08:00 AM	Wait until 8:00 AM
2	1	This is the top of a Cycle loop.
3	00:10	Run for 10 minutes
4	00:50	Stop for 50 minutes
5	8	Do steps 3 through 4, 8 times, then continue.

Upgrade to Gilian connect at:
<http://Sensidyne.com/connect>

